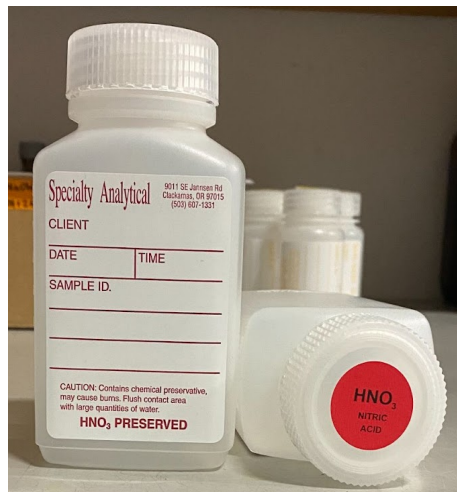


SPECIALTY ANALYTICAL
SAMPLE CONTAINER & PRESERVATION REQUIREMENTS FOR ANALYSES



250mL HNO₃ (Nitric Acid) preserved poly
Aqueous samples

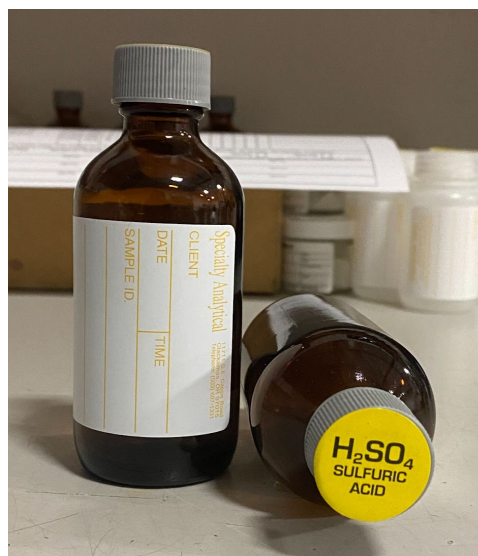
Total metals by EPA 200.8
Total dissolved metals by EPA 200.8
Total metals by EPA 6020
Total dissolved metals by EPA 6020
Hardness
Mercury
Metals screening
Metals isotopes
Sodium absorption ratio



125mL H₂SO₄ (Sulfuric Acid) preserved poly

Aqueous samples

COD
Nitrate + Nitrite (N2N3)
NH₃
NH₄
P-Total
TKN
Total Nitrogen

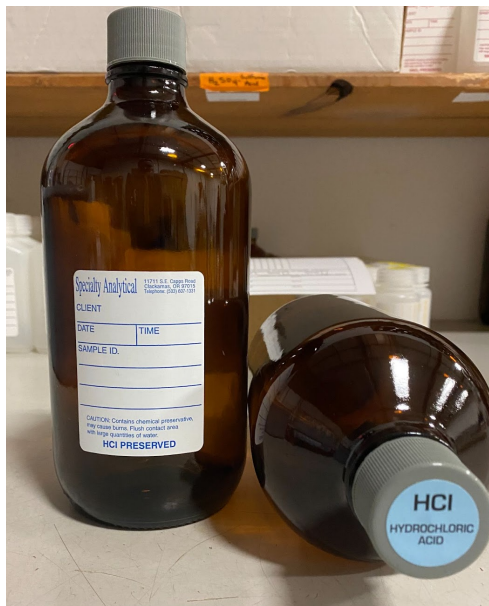


125mL H₂SO₄ (Sulfuric Acid) preserved amber

Aqueous samples

DOC
Phenolics
TOC

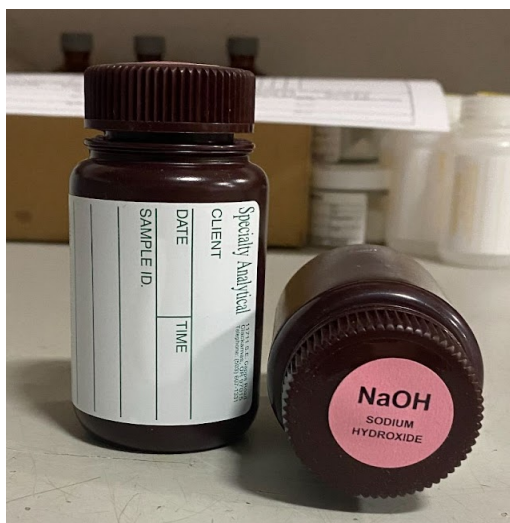
SPECIALTY ANALYTICAL
SAMPLE CONTAINER & PRESERVATION REQUIREMENTS FOR ANALYSES



1L HCl (Hydrochloric Acid) preserved amber

Aqueous samples

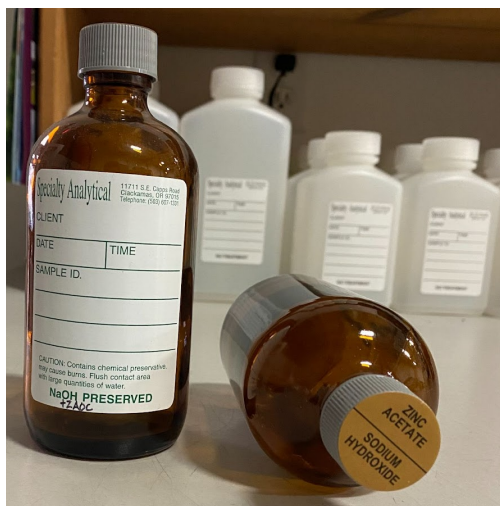
1664: Oil and Grease (HEM & SGT-HEM)
NWTPH-Dx : Diesel / Oil



125mL NaOH (Sodium Hydroxide) Preserved amber poly

Aqueous samples

Cyanide (Cn)
Amenable
Available
Total
Free
WAD



125mL Zinc Acetate/Sodium Hydroxide preserved amber

Aqueous samples

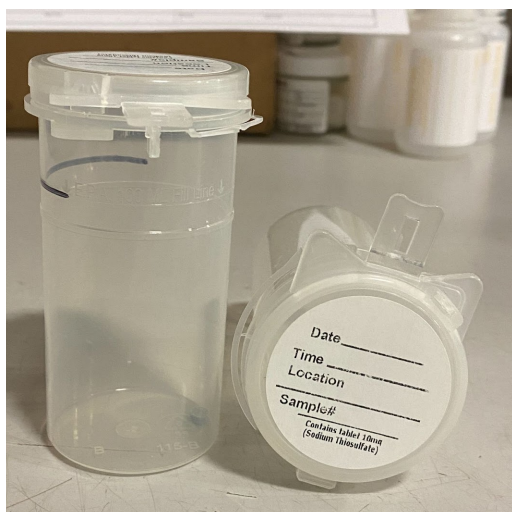
Sulfide

SPECIALTY ANALYTICAL
SAMPLE CONTAINER & PRESERVATION REQUIREMENTS FOR ANALYSES



125mL EDTA preserved amber poly
Aqueous samples

Arsenic speciation



Coliform bottle
10mg tablet of Sodium Thiosulfate
Aqueous samples

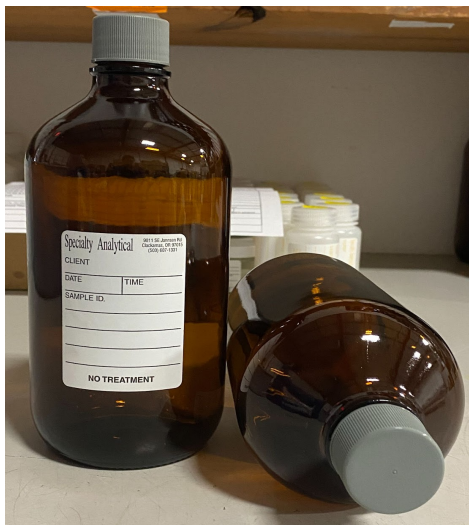
E.Coli
Fecal coliform
Total coliform

SPECIALTY ANALYTICAL
SAMPLE CONTAINER & PRESERVATION REQUIREMENTS FOR ANALYSES



1L, 500mL, 250mL unpreserved polys
Aqueous samples

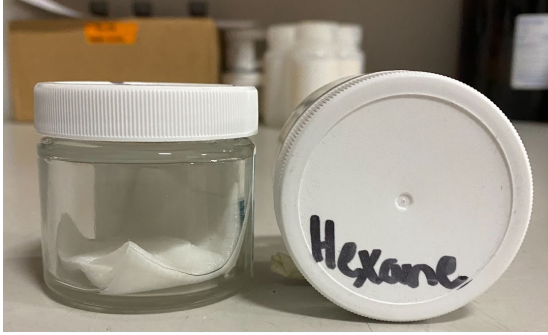
- Alkalinity
- BOD
- Bromide
- Chlorine residual
- Chloride
- Trivalent chromium
- Hexavalent chromium
- Fluoride
- Ignitibility
- Nitrate
- Nitrite
- Orthophosphate
- pH
- Salinity
- Specific Gravity
- Sulfate / SO₄
- Sulfite
- Tanin & Lignins (TN)
- Total dissolved solids (TDS)
- Total settleable solids (TSS)
- Turbidity
- Viscosity
- Volatile solids (VS)
- Volatile suspended solids (VSS)



1L unpreserved amber bottle
Aqueous samples

- EPA 608 Organochlorine pesticides & PCBs
- EPA 625 Base / Neutrals and Acids
- EPA 8082 Polychlorinated Biphenyls PCBs
- EPA 8081 Organochlorine pesticides
- EPA 8151 Chlorinated herbicides
- EPA 8270 Semivolatile organic compounds
- EPA 8315 Carbonyl compounds by HPLC
- MBAS (Anionic surfactants)
- Settleable solids (SS)

SPECIALTY ANALYTICAL
SAMPLE CONTAINER & PRESERVATION REQUIREMENTS FOR ANALYSES

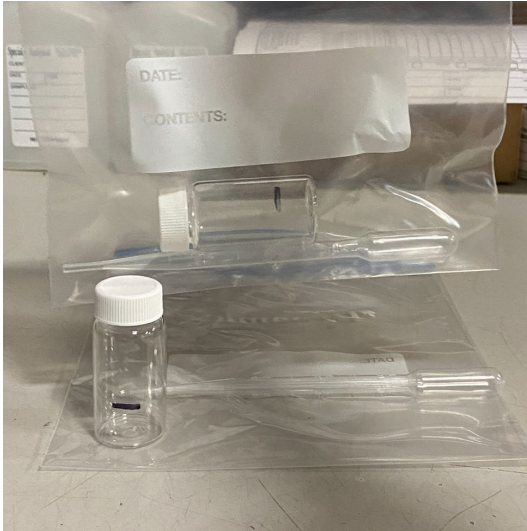


PCB Wipe Kit

- (1) Sterile gauze in 4oz jar, preserved with hexane

EPA 8082

Keep gauze damp with hexane



PCB Oil Kit

- (1) Glass vial
- (1) plastic pipette

EPA 8082

Fill to black line



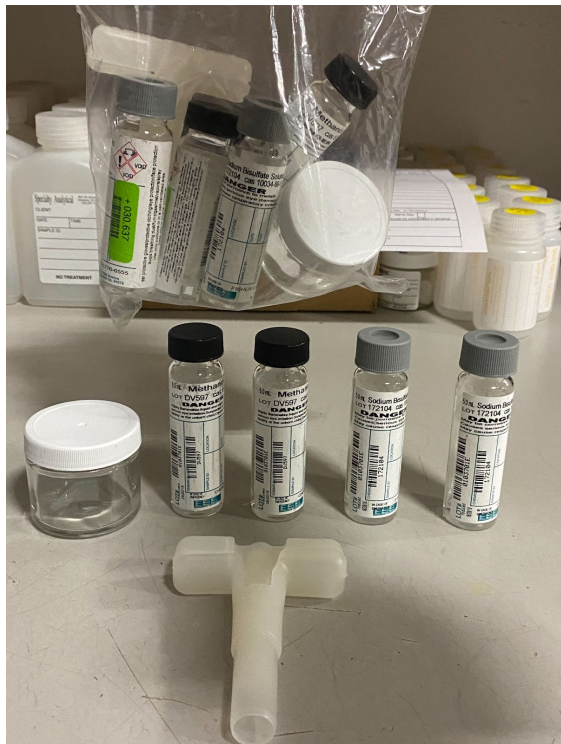
Metals Wipe

- (1) Ghost wipe
- (1) 100cm² template
- (1) tube

Metals by EPA 200.8 and EPA 6020

Mercury requires its own wipe and tube

SPECIALTY ANALYTICAL
SAMPLE CONTAINER & PRESERVATION REQUIREMENTS FOR ANALYSES



5035 Kit: Preserved sampling of soils for volatile analysis

- (2) 50mL Methanol preserved vov vials - black lids
- (2) 50mL Sodium bisulfate preserved vov vials - gray lids
- (1) 4oz Jar
- (1) "T" Sampler

8260

NWTPH-Gx Gasoline